

CHINESE-AMERICAN PLANNING 60 YEARS COUNCIL



**Thriving
Across
Generations:
60 Years
and Beyond**

2025 ANNUAL REPORT

60
YEARS



Founded in 1965, the Chinese-American Planning Council (CPC) is a social services organization that creates social change. Building on our historic legacy and ongoing dedication to the Chinese American community, CPC advances the social and economic progress of immigrant and low-income communities of New York through services, resources, and advocacy.

We are guided by our organizational values:

We are our community.

We are committed, inclusive, and responsive to our diverse community members.

We embrace our community.

We promote integrity, trust, and accountability to the highest quality standards.

We empower our community.

We inspire leadership, equity, and progress among staff and community members.



BOARDS

Chinese-American Planning Council Inc.

Flora R. Si, Chair
Howard Chin, Vice Chair
Vanessa Chiu, Treasurer
Gigi Lam, Secretary
Li Yan Chen
Ruoxi Chen
Calvin Chin
Gebond Chow
Sheridan Chu
Daniel Ho (*Incoming*)
Virginia Kee
Christopher Kuo
Chester P. Lee
Michael Lee
Fabien Lefebvre
Eddie Mo
Suyin So
Veronica Tsang
Pat Wang
Cynthia Zhu

CPC Home Attendant Program Inc.

Gigi Lam, Chairperson
Veronica Tsang, Vice Chairperson
Gebond Chow, Treasurer
Sheridan Chu, Secretary
Lena Chang
Benjamin Eng
Michael Lee
Edward Ma
Eddie Mo
Flora R. Si

CPC Tenant and Building Services Inc.

Howard Chin, Chair
Calvin Chin, Vice Chair
Eddie Mo, Treasurer
Anthony Liu, Secretary
Gigi Lam
Chester P. Lee
Flora R. Si
Veronica Tsang

LEADERSHIP TEAMS

Chinese-American Planning Council Inc.

Wayne Ho, President & Chief Executive Officer

Administration

Brian Chen, Chief Strategy Officer
Carlyn Cowen, Chief Policy and Public Affairs Officer
Alice Du, Director of Communications
Luther Flurry, Chief Financial Officer
Alan Gerson, General Counsel
Elizabeth Hendler, Director of Institutional Advancement
Marilla Li, Director of Programs
Mabel Long, Director of Donor Engagement and Special Events
Edgar A. Pereira, Chief Program Officer
Pik Kam So, Director of Human Resources
Edwin Tablada, Senior Director of Policy and Advocacy
Kim To, Chief Development Officer
Alice Wong, Chief of Staff
Bill Yeung, Chief Operating Officer
Lillian Zhao, Senior Director of Finance

Programs

Judy Ah-Yune, Director of Manhattan Community Services
Mary Cheng, Director of Childhood Development Services
Amy Latorres, Director of Education and Career Services
Steve Mei, Director of Brooklyn Community Services
Po-Ling Ng, Director of Senior Services & Assistant Executive Director
Mitchel Wu, Director of Queens Community Services

CPC Home Attendant Program Inc.

John Sullivan, Chief Operating Officer
Julian Kang, Assistant Director for Administrative Services
Karina Lee, Director of Patient Services

LEADERSHIP COUNCIL

Richard Cao, Co-Chair
Christopher Kuo, Co-Chair
Joe Tan, Vice-Chair

Members

Vincent Cao
Lena Chang
Wendy Chu (*Outgoing*)
Willis Guo
Rick Hu
Wesley Lai
Stewart Lee
Jim Li (*Outgoing*)
Joanne Lin
Vivian Fang Liu
Ernie Ng
Eric Pan
Thomas Sze
Ken Wang
Warren Zhou

LETTER FROM BOARD CHAIRS AND PRESIDENT/CEO

Dear Friends,

On behalf of the Boards, Leadership Council, and staff of the Chinese-American Planning Council (CPC) and subsidiaries, we are excited to present our 2025 Annual Report. This year's theme, "Thriving Across Generations: 60 Years and Beyond," celebrates 60 years of transformative service and the collective impact we have achieved, while looking forward to meeting our community's evolving needs and empowering future generations.

This past year, we provided educational and recreational programming to children across six afterschool sites, creating safe spaces for learning and growth; prepared students for higher education through our college access and success programs, equipping them with the tools for future achievement; connected community members to essential support and resources, guiding them through complex systems to unlock opportunities for stability and success; established our centers as second homes for older adults, enabling them to rediscover purpose through lifelong learning and meaningful connections; and reached thousands of voters through registration and education initiatives, empowering our community's voice in the democratic process.

In this year's report, you will find stories about a young immigrant student who found confidence and a path to leadership, a single mother able to focus on her master's degree while her five children thrived in our after-school care, and an older adult gaining new skills and financial stability to care for his ill wife. These narratives are at the heart of what CPC has done, still does, and will continue to do.

As we celebrate 60 years of service, we look ahead, recommitting ourselves to ensuring that every community member has the resources to thrive and to advancing social and economic progress that will carry our mission forward for the next 60 years and beyond.

Thank you for your continued partnership and support as we uplift our communities together!

Sincerely,



A handwritten signature in black ink, appearing to read "Flora Si".

Flora R. Si

Board Chair



A handwritten signature in black ink, appearing to read "Wayne Ho".

Wayne Ho

President & CEO



1. What inspired you to create CPC?

In the 1960s, waves of immigrants came to the United States seeking new opportunities. As a junior high school teacher in Chinatown, I saw youth were struggling with language barriers, falling behind in school, and at risk of joining gangs. After asking myself, "What can I do for these young people?" I wrote the first proposal seeking federal funds. We were awarded and were able to launch a summer program at 3 Pell Street. From that effort, CPC was born.

2. What kept you going when CPC faced challenges?

My husband and my students. My husband was an engineer who later became a doctor. He was always supportive and gave me confidence. When I was standing in front of my students in the classroom, I always thought, "We must do better for them. We have to ensure the road ahead is a better one for them."

3. What CPC milestone stands out the most for you?

One of my proudest moments was cutting the red ribbon for Hong Ning Housing for the Elderly. It was a turning point, as CPC was the first and only Asian American organization to establish a HUD 202 building east of the Mississippi at that time.

4. How has CPC changed the lives of immigrants, children, families, and seniors in the community?

CPC has grown with NYC's community since 1965, serving generations. Former participants have returned as CPC staff, and CPC inspired others to go on to create cornerstone organizations like the Chinatown Health Clinic (now the Charles B. Wang Community Health Center), Asian American Federation, CMP, and more. Together, we form a strong network of Asian American organizations advancing equity and opportunity across New York City.

5. What does CPC's 60th anniversary mean to you?

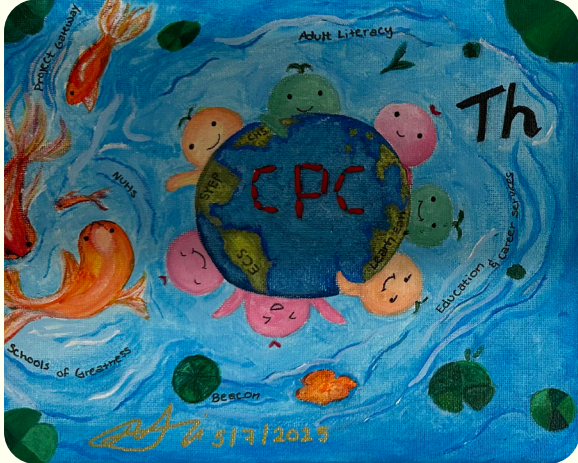
CPC's 60th Anniversary is such a proud moment. It shows that for six decades we have stayed true to our mission—never giving up, even during the toughest times. I am deeply grateful to the former leaders, staff, and community members whose dedication built this foundation and carried CPC forward. This milestone is a celebration of their heart, belief, and commitment, as well as the hope for future generations.



CELEBRATING CPC'S 60TH ANNIVERSARY WITH ORIGINAL ARTWORK

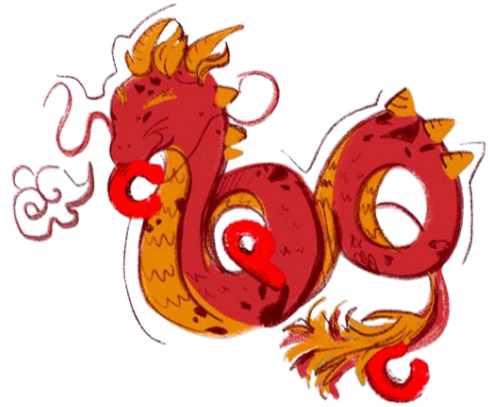
To mark CPC's 60th Anniversary, we hosted a community art exhibition with the theme "Celebrating our Legacy, Inspiring the Future." The exhibition was a multigenerational event, open to submissions from both CPC staff and the wider community.

Yi Wendy Ng Liang



In celebration of the Chinese-American Planning Council's 60th Anniversary, Wendy would like to honor CPC's lasting impact on the community. Although CPC is a large organization, its members come together like a school of fish, united and flowing with positive energy toward a shared mission.

Karina Wu Ng Ho



I drew my inspiration for CPC's 60th anniversary design from the symbolism of the dragon in Chinese culture. The dragon represents strength, wisdom, and nobility, which are values that reflect CPC's dedication and commitment to our community.

Z. Jack Hsia



This painting is intended to evoke the feeling of being in the crowd, at protest actions, and celebrations I've been in over the years, and all the intergenerational and intersectional movements and messages that bring people together to fight for their rights and dignity. If you look closely, the CPC Policy Dragon hat is part of the crowd, leading and supporting the communities we're all a part of.

Ms. Lin



It is made from yarn and threads collected from many different countries, symbolizing the diverse cultures within our community. Through the act of weaving, this piece represents how CPC connects and unites people from all backgrounds. The interlacing threads, woven vertically and horizontally, reflect how CPC has built strong ties between residents, resources, and cultures over the past 60 years. Just like the woven fabric, our community is stronger and more beautiful when united.

Zhaoye Wu



My inspiration is that I see CPC as a beacon in the dark that guides me through the unknown; a friend that creates remarkable memories; and a supporter that aids me in achieving a better future.

Ramon Diego Chen Wu



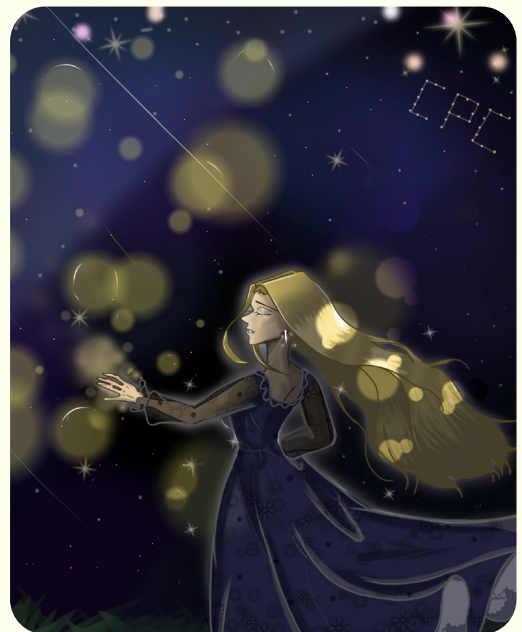
The tree represents CPC being rooted in legacy and rising toward tomorrow.

Joy Zheng



The piece is to show how CPC was able to not just create a community, but specifically to create one that allows students from various backgrounds to come together. Students are able to create strong bonds and receive guidance to enjoy their time as teens while also receiving life skills that prepare them for their future.

Kyla Li



A woman stands at peace, eyes closed in a way that shows comfort and is surrounded by twinkling orbs which symbolize inspiration and hope for the future. The drawing illustrates what CPC means to me, it has brought me a sense of wholeness and belonging, a place where I call home without judgement, and moments when I found myself never wanting to leave. To me, CPC is so much more than just an 'afterschool program', it's everything.

OUR IMPACT - EDUCATION

We provide high-quality learning opportunities for all ages – from preschool and afterschool enrichment to adult English classes – because education is lifelong.



- **100% of children** in CPC's six school-age afterschool programs were promoted to the next grade level.
- **1,175 children** received free or affordable STEM, arts, and recreational programming across six school-age afterschool sites.
- **347 community members** participated in HIV/AIDS 101 workshops over 15 sessions.
- **191 children** participated in programs at CPC's six early childhood centers.
- **1,257 students** participated in CPC Project Gateway college access and success programming.
- **885 community members** learned English through the CPC Adult Literacy Program.
- **280 youth participants and community members** joined CPC Community Health Services educational workshops on youth and queer health and education over 54 sessions.
- **182 students** in the CPC LEAD afterschool program at the High School for Dual Language and Asian Studies advanced to the next grade level or graduated.

FROM STUDENT TO LEADER: FINDING GROWTH THROUGH COMMUNITY

Yong Yi Li Zhang was 10 years old when her family moved from Venezuela to New York in 2019. Her family left in search of better educational opportunities for her and her sister, but starting over in New York City wasn't easy. Struggling with English, she found it difficult to make friends or feel at home in her new school.

Everything began to change when her sister discovered a flyer for CPC's afterschool program at Fort Hamilton High School. Known as the Neighborhood Development Area (NDA) Program, this program combines academic tutoring, mentorship, and internship opportunities to help students strengthen their studies, build confidence, and prepare for the future. Looking for both academic help and a place to meet new people, Yong Yi joined during her freshman year. What she found was more than

academic support—she found a community.

"At first, my goal was just to meet new friends," Yong Yi recalls. "Now, most of my closest friends are from CPC."


Over the past two years, CPC has become a place where Yong Yi could be herself. She grew from being a shy newcomer into a confident student and, eventually, a peer tutor—helping others with their coursework, just as she had once been helped.

"This was my first job," she explains. "I really enjoyed helping others and working with my coworkers and supervisor." The experience gave her the confidence to pursue new opportunities, including her first summer job through the Summer Youth Employment Program (SYEP) as a barista.

Now 16, Yong Yi is focused on her future. She plans to pursue a degree in education, guided by her experience as a tutor and commitment to helping others the same way she was once helped.

What was once an unfamiliar environment has become a place of comfort and excitement—a space she looks forward to every day. Yong Yi's story is proof of how CPC's programs don't just offer support; they spark confidence, friendships, and new possibilities.

We are grateful to our funders of this programming, including the New York City Department of Youth and Community Development.



"At first, my goal was just to meet new friends. Now, most of my closest friends are from CPC."

OUR IMPACT - FAMILY SUPPORT

We make it easier for individuals and families to access personalized social resources because support is fundamental to success.



- **10,343 community members** received enrollment assistance or referrals for benefits programs.
- **6,251 community members** made CPC's older adult centers a second home.
- **Over 1,000 families** participated in the afterschool services, enrichment classes, and community building activities offered by the CPC Beacon program at IS 220.
- **285 families** at PS 94 found support through afterschool and summer programs, food pantry, and other family services.
- **7,810 community members** benefited from CPC's Early Childhood Learning & Wellness Services, including quality child care, parent education, and provider training.
- **6,643 community members** received home care services through subsidiary CPC Home Attendant Program.
- **910 children** enrolled in CPC Family Child Care Networks, Child Care Assistance Program, and affiliated child care programs.
- **83 families** were kept safe and together by CPC Asian Family Services through counseling, training, and community outreach.

SAFE, SUPPORTED, AND THRIVING

Ariel's top priority was simple but vital: making sure her children were safe, supported, and thriving. With five children attending three schools across multiple boroughs, she faced a daily balancing act—a challenge for any parent raising children alone in New York City. On top of that, she is pursuing her master's degree in Clinical Mental Health Counseling, which made access to an affordable afterschool program essential so she could focus on her education while ensuring her children were cared for and supported.

She needed an afterschool program that was close to home, where her children could get help with homework, explore new interests, and feel part of a community. Working with the dedicated staff at the CPC School-Age Child Care Center at PS 20, Ariel found exactly that. "Everyone was really welcoming and understanding. My children love

the staff and have become a part of the CPC family," Ariel shares. "The program brought structure and stability to our lives, and it was the greatest help I could have asked for."

Located in the heart of Flushing, Queens, the center is more than childcare—it is a bridge between school, family, and community. Ariel has seen each of her children thrive at CPC, but the greatest growth has been in her oldest child. Naturally quiet and reserved, he found connection through a gaming project led by a teacher who shared his passion.

"Having a teacher nurture his emotional needs was the biggest highlight in the entire program, and it was a catalyst for everything else for him. He smiles more often; he trusts more often," said Ariel.

This past summer, Ariel joined CPC as a staff member in the Summer Rising

program at PS 20. "Now, I'm not only a parent of CPC, but I'm also an employee. Seeing it from two sides—and it is still congruent—says a lot about the program. CPC is authentic and consistent. That's what we all need," she reflects.

Through organizations like CPC, families like Ariel's can pursue their dreams while knowing their children are safe, supported, and thriving.

We are grateful to our funders of this programming, including the New York City Department of Education.

"Now, I'm not only a parent of CPC, but I'm also an employee. Seeing it from two sides—and it is still congruent—says a lot about the program."



OUR IMPACT - ECONOMIC AND COMMUNITY EMPOWERMENT

We empower New Yorkers through training, counseling, and advocacy – so that everyone feels comfortable intervening and speaking up – to create long-term, sustained transformation within our communities.



- **85,000 voters** reached with the support of 200 volunteers through voter registration, education, and Get Out The Vote initiatives.
- **1,900 community members and staff** participated in advocacy actions, including CPC's 8th City Advocacy Day and 7th State Advocacy Day.
- **720 participants** learned about diversity, inclusion, anti-discrimination, and life skills through CPC Project Reach.
- **250 older adults** collected fresh produce biweekly through our partnership with GrowNYC in Brooklyn.
- **4,219 young people** made a difference through project-based activities and summer internships at hundreds of job sites.
- **1,172 community members** accessed mental health support services through CPC's Older Adult Mental Health Initiative and Community Resiliency Support Services.
- **310 legislative visits** were conducted to advocate for our communities at the city, state, and federal levels.
- **50 community members** were placed at jobs with an average wage of \$20.86/hour through the CPC Career Center.

DEVELOPING SKILLS AT ANY AGE

Mr. Wu had a goal of finding steady work that would allow him to support his family while also caring for his wife, who was ill. But with limited English and his age, those opportunities felt out of reach. In early 2022, he and his wife were introduced to CPC through online English classes. What began as language learning soon became a pathway to greater stability and hope for their future.

Through his English classes with CPC, Mr. Wu was connected to CPC's Senior Community Service and Employment Program (SCSEP), which assists 160 older adults annually with gaining work experience, training, and skills at CPC programs and affiliates, partner organizations, and local businesses.

CPC staff worked with Mr. Wu to understand the skills he already had and career goals. Mr. Wu was matched with CPC Nan Shan Older

Adult Center in Flushing, Queens, where he worked part time for twenty hours a week during mealtime at the center distributing meals, organizing the cafeteria, and engaging visitors in friendly conversation.

Through SCSEP, Mr. Wu gained valuable work experience in a supportive environment where he practiced communication, teamwork, and organization skills. During his training, he also received financial assistance, allowing him to continue caring for his wife. This arrangement helped him balance the priorities in his life, and the stipend he received helped him to cover their basic living expenses and stabilize their situation when they needed help most.

Mr. Wu said, "I really like SCSEP because it values older workers' personalities and abilities, allowing us to contribute to society while also helping us."

Despite the impact that SCSEP has had on the lives of Mr. Wu and tens of thousands of older Americans, the program has been paused and its participants furloughed since July 1, 2025, because of guidance from the U.S. Department of Labor (DOL). CPC hopes that the program is restarted soon.

We are grateful to our funder of this programming, the Center of Workforce Inclusion, which receives its funding from the U.S. Department of Labor.

"I really like SCSEP because it values older workers' personalities and abilities, allowing us to contribute to society while also helping us."



“We didn’t wait for change.

WE BUILT IT.”

— Virginia M. Kee, CPC Co-Founder

1965 – Founding of CPC

In the wake of the Immigration and Nationality Act of 1965, New York City experienced a surge of Chinese immigrants seeking opportunities and a sense of belonging. In response to urgent community needs, CPC offered language classes, youth programs, and laid the foundation for advocacy.

1972 – Opening Doors, Opening Hearts

With the launch of Project Open Door, CPC created its first multi-service center tailored to immigrant older adults, pioneering culturally responsive services to combat isolation, language gaps, and healthcare inaccessibility.

1982 – Creating Chung Pak Local Development Corporation

When a detention center threatened to displace Chinatown residents, CPC mobilized the community and founded the Chung Pak Local Development Corporation, which included the Charles B. Wang Community Health Center Pediatric Clinic and the CPC Chung Pak Early Childhood Center. This secured affordable housing for older adults and became an early example of NYC’s immigrant-led policy activism.



2001 – Supporting Chinatown’s Recovery After 9/11

Just ten blocks from Ground Zero, Chinatown was devastated by 9/11 as tourism collapsed, and jobs were lost. CPC responded with relief and small business support, while raising awareness of and advocating against the community’s exclusion, and continuing to help residents access 9/11 Victim Compensation Fund.

2018 – Establishing City & State Advocacy Days

CPC launched City & State Advocacy Days, mobilizing community members to meet with elected officials and demand investment in social services. These annual events are cornerstones of CPC’s civic engagement strategy and amplify community voices in the halls of power.

2021 - Standing Strong Against Hate

Amid COVID-19 and rising anti-Asian violence, CPC launched education campaigns, secured the historic AAPI Equity Budget, and reaffirmed its commitment to racial justice through the #StopAsianHate campaign.

Present - Fighting for Fair Wages and a Just Future

CPC leads with impact: winning cost-of-living adjustments for human service workers through #JustPay, advancing living wages through Fair Pay for Home Care, and advocating at every level—from City Hall to Washington D.C.—for economic opportunity and community well-being.

PUBLIC SUPPORT (JULY 1, 2024 – JUNE 30, 2025)

United States Senator Charles Schumer
United States Senator Kirsten Gillibrand
Governor Kathy Hochul
Senator Andrew Gounardes
Senator Brian Kavanagh
Senator John C. Liu
Assembly Member Grace Lee
Assembly Member Marcela Mitaynes
Assembly Member Steven Raga
Assembly Member Nily Rozic
Speaker Adrienne Adams
Councilmember Alexa Aviles
Councilmember Justin Brannan
Councilmember Crystal Hudson
Councilmember Shekar Krishnan
Councilmember Linda Lee
Councilmember Julie Menin
Councilmember Mercedes Narcisse
Councilmember Keith Powers
Councilmember Lincoln Restler
Councilmember Carlina Rivera
Councilmember Lynn Schulman
Councilmember Sandra Ung
Councilmember Susan Zhuang
City Council Speaker's Fund
City Council AAPI Community Support Initiative
City Council Access Health Initiative
City Council Adult Literacy Initiative
City Council Adult Literacy Pilot Project
City Council Digital Inclusion and Literacy Initiative
City Council Food Access and Benefits Initiative

City Council Food Pantry
City Council Older Adults Mental Health
City Council Older Adult Clubs for Immigrant Populations
City Council Protect Our Families NYC
Center for Workforce Inclusion / U.S. Department of Labor
Citymeals On Wheels
Coalition for Asian American Children and Families / New York State Department of State
Day Care Council of New York / New York State Office of Children and Family Services
Henry Street Settlement / New York City Department for the Aging
Hunger Solutions New York / New York State Office of Temporary and Disability Assistance
Metropolitan Council on Jewish Poverty / New York City Department for the Aging
The National Council on Aging / Administration for Community Living, U.S. Department of Health and Human Services
New York City Administration for Children's Services
New York City Department for the Aging
New York City Department of Education
New York City Department of Health and Mental Hygiene
New York City Department of Housing Preservation and Development
New York City Department of Social Services
New York City Department of Youth and Community Development

New York City District Council of Carpenters
New York City Emergency Management
New York City Human Resources Administration
New York Legal Assistance Group / ActionNYC (New York City Department of Social Services/Human Resources Administration, Office of Civil Justice, Mayor's Office of Immigrant Affairs)
New York State Council on the Arts
New York State Department of Health
New York State Department of Health, AIDS Institute
New York State Department of Education
New York State Department of State
New York State Office for New Americans
New York State Office for People With Developmental Disabilities
New York State Office of Children and Family Services
New York State Council on Developmental Disabilities
Research Foundation of CUNY / New York City Department of Social Services/Human Resources Administration and the Mayor's Office of Engagement
United Way of New York City / New York State Office of Temporary and Disability Assistance
U.S. Substance Abuse and Mental Health Services Administration

MEMBER OF



Mission Partner



PRIVATE SUPPORT

\$100,000+

Anonymous
The Hearst Foundations **
Jessica Hu and Jonathan Eddy
Korean American Community Foundation
MacMillan Family Foundation
Mother Cabrini Health Foundation
The New York Community Trust
New York-Presbyterian
NYU Grossman School of Medicine
The Ong Family Foundation (Mission Partner:
Karen Chang Liu Staff Development Fund &
Lois C. Lee Early Childhood Center)
Robin Hood
The Asian American Foundation **

\$50,000 - \$99,999

Avery Tsui Foundation
DoorDash
The Fan Fox and Leslie R. Samuels
Foundation **
Gotham Organization
The Ichigo Charitable Fund
Ken Fong and Frances Onne-Fong
Maria Poon Memorial Charity Fund **
Richard A. Steinwurtzel *

\$10,000 - \$49,999

1199SEIU United Healthcare Workers East
Anita Lau Chen and Corey Chen **
Asian and Pacific Islander American Vote
Bank of Hope
Beatrice Lau-Kee
Bloomberg
Broadway Cares/Equity Fights AIDS
Cathay Bank Foundation
Center for Artistic Activism
Center for New York City Affairs at
The New School
Charter Communications
Chester, Diana, Michael, and Grace Lee **
Chester P. Lee and Helen Chiu
Chinatown Manpower Project
Chung Pak LDC
C.J. Huang Foundation/ Paul Huang **
Coalition of Asian-American IPA *
Con Edison
Dean Fong and Linda Lee **
Deborah Chan, PC
EastBridge Foundation
East West Bank
Family Health Centers at
NYU Langone *
Flagstar Foundation
Flora R. Si and Larry Woo **
Flushing Bank *
Gebond and Melody Chow **
Guardian
Healthfirst
HealthNeed Medical Urgent Care, Joy Senior
Social Day Care, and Ikare Beauty *
HSBC Bank USA, N.A. **
Hudson Yards West

J.T. Tai & Co. Foundation, Inc.
J & K Pi Family Foundation
Janice Lee Won and Raymond Won **
Joe and Clara Tsai Foundation
JPMorgan Chase
Julia Louis and Lily Siddiqui
Karen Chang Liu and David Liu
Karen Ling
Kenneth Kirschner and Andrea Chase
Koke Fong
Korean American Family Service Center
The Kuo Family
Lau-Kee Law Group
Lin & Susie Chen Foundation
Loyola Group
Lucy and Sai Chan/ Schwab Chan Family
Charitable Fund
Lucy and Victor Kan **
Lui and Wan Foundation
Marsh McLennan Agency *
Metropolitan Park/ Point72/ Queens Future *
MinKwon Center for Community Action
MMS Group/ TUC /ARCO Management
Moelis and Company Group LP
Morgan Stanley
National Financial Network
National Immigration Law Center
The New York Immigration Coalition
New York-Presbyterian Queens
NYCEAL
Pat Wang
Paul, Weiss, Rifkind, Wharton & Garrison LLP
Pauline D. Chen
Peggy Wong and Edward Wong
Pitta & Baione LLP
The Proskauer Rose Charitable Foundation *
PwC US and Mexico
Resorts World New York City *
Royal Business Bank
Ruoxi and Sherry Chen
The Shau-wai and Marie Lam
Family Foundation
Soros Fund Management LLC
Stellar Management
SUNY Impact Foundation
Suyin So and Jeff Hao **
Tiger Baron Foundation
Tronex Company
Vanessa Chiu and Jason Valino
Veronica Tsang **
Virginia M. Kee and Herbert L. Kee
WAC Lighting Co.
The Warburg Pincus Foundation
Womankind
YMCA of Greater New York
Yuco Management

\$5,000 - \$9,999

Alexander Drexler and Karen Lam-Drexler
Bank of America Charitable Foundation
Bank of China U.S.A.
Barasch & McGarry *
Capital One

Carley Roney
Cathay Bank
Change Impact
Clune Construction Company LP
Council of School Supervisors
and Administrators
David Chiang
Day Care Council of New York
Denny and Barry Lee
Donald Chu and Poyee Tai
Elizabeth Chan
Elizabeth Poon
EmblemHealth
Evan Matthew Wong
F5
Goldman Sachs
Gracie Square Hospital
HHAExchange
Homecrest Community Services *
Jasmin Gaskin
Johnnie Walker
Johnson & Johnson
Kelley Drye & Warren LLP
Kevin Jones
Lam Group
Linda Sanchez
Li Yan Chen **
Lois and David Lee
Mary S. Lee and Robert C. Lee
Mel Lee and Richard Young **
MetroPlusHealth
Michael Sullivan
NCheng LLP
Po Wing Hong Food Market *
Pui Chi Cheng **
Rendr *
Rosemarie and Lee Shomstein
Sheltering Arms Foundation
Southpole Foundation
The SPIA Foundation
UJA-Federation of New York
United Federation of Teachers
UnitedHealthcare
VillageCareMAX
Wai C. Chung
Wayne Ho and Eda Chao **
Wesley J. Lai
Yung Yu Leung and Yung Foo Sai Chong

\$1,000 - \$4,999

Aaron Hatton and Kendra Ho-Hatton
AARP
A Chance Fund
Acrisure/ HL LEE Insurance Services
Affinity by Molina Healthcare
Alastair Onglingswan
Alison Overseth and Ken deRegt
AllianceBerstein
Amazon' Mets Foundation
Amy Ho
Andrew Lee
Annette Montalvo **
Annie and Jerry Chang

PRIVATE SUPPORT

Anthony and Stephanie Liu	Henry Street Settlement	NYU Rory Meyers College of Nursing
Apicha Community Health Center	Howard Chin	The Omni Agency
Arab-American Family Support Center	Howard Lee and Florence Lee	Parent-Child Relationship Association
Art Chang	Human Services Council	Pauline Lock
Asian American/ Asian Research Institute	IBM	Paul Jiang
Asian American Bar Association of New York	Immigrant Social Services	Paycom
Asian American Federation	Iris Chau	Peter and Wai Law
Augustus Moy	Jamie Fee	Peter Fu
Bank of America	Jarryd Begbie	Peter Mei
The Bank of East Asia, Limited	Jeffrey K. Oing and Mary Hom **	PIMCO
Bickie and Shu Yan Chu	Jenny and Darrell Low	Ping and Chi Ling Moy
Brooklyn Arts Council	Jessica Ke	Po and LiYung Sit
Brooklyn Chamber of Commerce	Jim Li	Preferred Bank
Bruce N. Lederman	Jing Shih and Alvin Shih	Randy Mastro
Bryan Kelly	Joan Chan	RBH Center
Catholic Charities of New York	Joan Cheng	Real Evergreen International, Inc.
Celestial Love Foundation	Joanne Lin	Richard Cao
Charles B. Wang Community Health Center	Joe Tan	Richard Ong
Chen Yu	John and Mary Liu	Rick Hu
Chhaya Community Development Corporation	Josephine C. Yan	RiverSpring Health Plans
Child Development Support Corporation	Joyce Chang and David Robbins	Royal Care
Chinese American Service League	Judith Ehm Foundation	Ruth Gyuse Architecture Design
Chris Luo	Julie Chiu and Chee Hu	Sakhi for South Asian Survivors
Christopher Chin	Justin C. Yu	Samantha Falk
Citizens Bank	Karen Elizaga	San Kiang Charitable Association, Inc.
Coach Express MA Inc	Kathryn Chin	Sapna NYC
Coalition for Asian American Children and Families	Kelly Jiang	Sheridan C. Chu and Ting Yan Wu **
Common Cause Education Fund	Kenneth Chin and Lisa S. Lim	Sophie Gerson Healthy Youth
Connie Ruan	Ken Wang	South Asian Youth Action
Council of Family and Child Caring Agencies	Kinglum Gotham Properties, LLC	Stanley Ng
Council of Peoples Organization	Kirkland & Ellis LLP	Stephen Powers
CPC Pike St. SACC at P.S. 2 Parents	Kok Choy Chan and Family	The Steven Hocevar Fund (Thrivent Member Network Regional Board Member) of Thrivent Charitable Impact & Investing
CSA Asian American Association	Korean Community Services of Metropolitan New York	Steven Lee
Cynthia Zhu and Antoine Jacon	Lafayette 148 New York	SURJ NYC
Daniel Ho	Laichu Yung	Team Wethrive Inc
Deborah Joa	Lars Johansson and Danielle Orden	Tech: NYC Foundation
Deloitte Services LP *	Lena L. Chang and Terry Chang	Teresa Low
District Council 37, American Federation of State, County & Municipal Employees	Lian Fang Mei and Family	Theodore P. Shen and Mary Shen
Eastman Realty, Inc.	Linda Lew Woo	Thomas Yee
Eddie Mo **	LiveOn NY	Tian Shun Restaurant
Edeun Yee Chang and Ricky Da Yi Chang	Loida Lewis	Time One Pharmacy
Edmund Lee	Maimonides Medical Center *	Timotheus Osnabrug and Helena Hasselmann
Educational Alliance	Mannings Surgical Supplies and Confucius Pharmacy	Tony Yung
Edward and Lily Ma	Mark R. Stein	ToTo Images Inc.
Edwin and Katherine Wong	Matthew A. Won and Fang Zhou	United Chinese Association of Brooklyn *
Eric Hopp	Metrobank	United Neighborhood Houses
Eva Diamond Corp	Miao Christine Lin	University Settlement
Fabien Lefebvre	Mona So	Vanessa Li
Federation of Protestant Welfare Agencies	Mon Chan	Victoria Lee
Flushing Town Hall	N.A. Trading Company	Vincent Cao
Flushing YMCA	National Committee on United States-China Relations	VNS Health
Fook Funeral Group	Nerou N. Cheng	Warren Zhou
Gao Zhao	New Settlement Crenulated Co Ltd	Wells Fargo
Geoffrey Ling	The New York Academy of Medicine	Wendy Chu
George Chin	New York City Employment and Training Coalition	Wilem Wong
Gerrish H. Milliken	New York Life	William Cheung
Gigi Lam and Ken Chau **	Northfield Bank	William Liao
Google	NYCGives, a charity support program from the employees of New York City	Wu Family Charitable Foundation
Grand Street Settlement		The Yeung Family and Mark and Soy Yeung **
Groundswell		Ying Zhu Chen and Mei Na Chen
Hamilton-Madison House		YWCA

PRIVATE SUPPORT

Zack Yorke
Zhao Di Liu and Sing Ting Pau

\$500 - \$999

Adrienne Chan
Advocacy Institute
Alexander Eng
Alexis Moshang Daly
The Allure Group
Angie Tang
Asian Americans for Equality
Brain Nerve & Spine PLLC
Bryan Lee
CAIPA Foundation
CARES
Caribbean Equality Project
Chao Chiu Association, Inc.
The Child Center of NY
Chinatown YMCA
Chinese Chamber of Commerce of New York
Chinese Musical and Theatrical Association
of NY
Chinese Progressive Association New York
Chloe Cheng
Chun Yee Yip
Crown Home Care
Disney
Edward Chan and Pamela C. Singer
Fidelis Care *
Frances C Ho and Jack Ki Ho
Free Synagogue of Flushing
Grimaldi Yeung Law Group
Hand in Hand Development
Hong (Jessica) Miller
IEX
James and Marcia Flock
Jennifer Tam
Jennifer Tan
Jessica Cheng
Jewish Community Relations Council of
New York
JMB Industries Inc.
JPMorgan Chase Foundation
Juliana Dyck
Justin Doshi
Karen Lin and John Tsai
Keira Huang
Kelsey Louie
Korean American Civic Empowerment
The Landau Family Charitable Fund

Linda Tan
Mary Anne Gazdick
Medication Access Group
Michael Barasch
Michael Gee, Angela Chan and Caroline Gee
National Coalition for Asian Pacific American
Community Development
New York Council on Problem Gambling, Inc.
Niketa Sheth
Niko Stahl
NYU Langone Health
Organization of Chinese Americans -
NY Chapter
Park Asia
Queens High School for Language Studies
Parents Teacher Association
Robert Wood Johnson Foundation
South Asian Council for Social Services
State Employees Federated Appeal
Sunset Yards Elementary and Middle Schools
Suzanne Sievert
United Mutual Association
United Way
Vivian Young
Wayne Sang
X-Treme Care

Community Circle ***

Amy Shat Moi Chong
Betty Poon
Chaoren Lin
Christina Altomare
Cindy Xiao Liu
Elizabeth Wong
Jacki Kaufman
June Lui
Kenneth Chin
Lai Chu Yung and Chun Kwan Yung
Lisa Lee
Pamela Chen
William Soohoo
Wing Mei Chan
Yuhua Lin

In-Kind

Anthem Blue Cross and Blue Shield
Apollo Music Art Center
Asian American Activity Center, Inc.
Asian CineVision
Bay Ridge Volleyball
Brooklyn Book Bodega
Canal Street Market
CaringKind, The Heart of Alzheimer's Caregiving
Chinatown Social & Chinatown Snacks
Clean Beauty
Daddy Day
Family Harmony
Glory and Leo Wang
Golden Touch Home Health LLC
GrowNYC
Hammond Liang and David Chun
Heart of Dinner
Hitmark Republic
Hope Badminton
InStyle USA
Jerry and Ivy Ma
JinXiu Chen
Kam Hing Coffee Shop
Kam Mak
Lillian Gee
LocalMD
Love Mi
Lyft
Meals for Unity
Mr. Bing Foods
New York Cares
Norman Joeng
NYPD 109th Precinct
Olivia Chen and Isabella Liu
The Olowu, Ko-Baker, Hu, and Chen Families
Panda Basketball
Peking Foods LLC
Premier Soccer
Raising Cane's
Setlow
Shared Roasting
SUNY Downstate Health Sciences University
Trader Joe's (Rego Park)
United Cultural Association
Up One
Wellcare

* Contributed in-kind donations as well

** Included multi-year pledges (from previous fiscal years)

*** Community Circle is a group of dedicated changemakers who contribute to CPC on a monthly basis, providing steady support that helps sustain our mission and create lasting impact in the community.

Disclaimer: If you were a CPC donor between July 1, 2024 and June 30, 2025, and find your name missing, misspelled, or listed under the wrong heading, please accept our apologies.
Please contact Chloe Wong to update your gift, pledge, or contact information at
cwong5@cpc-nyc.org or call 212-941-0920 x 186.

UNAUDITED CONSOLIDATED FINANCIAL STATEMENT (JULY 1, 2024 — JUNE 30, 2025)

SUPPORT AND REVENUES	CPC	AFFILIATES
Government Grants and Contracts	\$ 46,868,420	\$ -
Contributions and Private Grants	4,350,818	-
Program Service Fee	5,590,536	171,427,631
Rental and Related Income	-	12,169,884
Licensing Fee Income	3,491,725	(3,491,725)
Management Fee	524,000	(504,000)
Special Events	818,800	-
Investment Income	3,633,958	130,211
Other Income	1,372,186	5,520,524
TOTAL SUPPORT AND REVENUES	<u>\$66,650,443</u>	<u>\$185,252,525</u>

EXPENSES		
Program Services		
Early Childhood Services	\$ 5,679,470	\$ (37,128)
School-Age Services	4,027,631	-
Youth Services	5,749,417	-
Workforce Services	1,274,386	-
Community Services	27,553,005	-
Older Adult Services	8,147,071	(897,678)
Home Attendant Program	-	151,193,923
Housing and Economic Development	-	11,124,416
Total Program Services	52,430,981	161,383,533

Support Services		
Management and General	10,929,623	18,680,468
Fundraising	1,459,280	-
Total Support Services	12,388,903	18,680,468
TOTAL EXPENSES	<u>\$ 64,819,884</u>	<u>\$ 180,064,001</u>

NOTES:

Draft unaudited results.

CPC's surplus will be expended in future years to support our mission and community. CPC Home Attendant Program had an approximately \$1.6 million deficit due to overtime costs and accounts uncollectible. CPC Affiliates' surplus reflected a \$5 million non-cash rent revenue accrual.



Back Cover Art: Mr. He's Statement:

Sixty years makes one full cycle in the traditional Chinese calendar, and over the past 60 years, CPC has accompanied countless children, youth, adults, and seniors through their journeys of growth. CPC has served as a strong and steady bridge connecting our communities, playing a vital role in improving residents' lives, providing emotional support, and securing access to essential resources.

In the painting, sixty adults and children hold hands on the bridge to celebrate CPC's 60th birthday. The rainbow in the sky symbolizes CPC's service to multicultural communities, while the rising sun represents a new beginning. The words "CPC" are engraved at the head of the bridge, and the golden number "60" also resembles the word "GO" in English, symbolizing continuous progress and innovation. The green mountains and white clouds in the background signify that CPC can lead us to greater heights and more beautiful horizons. Below the bridge, six lotus flowers, six lotus leaves, and six red fish represent the auspicious phrase liù liù dà shùn (六六大順), meaning smooth success and harmony. The red and blue clothing worn by the 60 people on the bridge are the same colors often worn by CPC's seniors.

We firmly believe CPC will continue to move forward with a renewed spirit and, as always, provide high-quality services to our community!